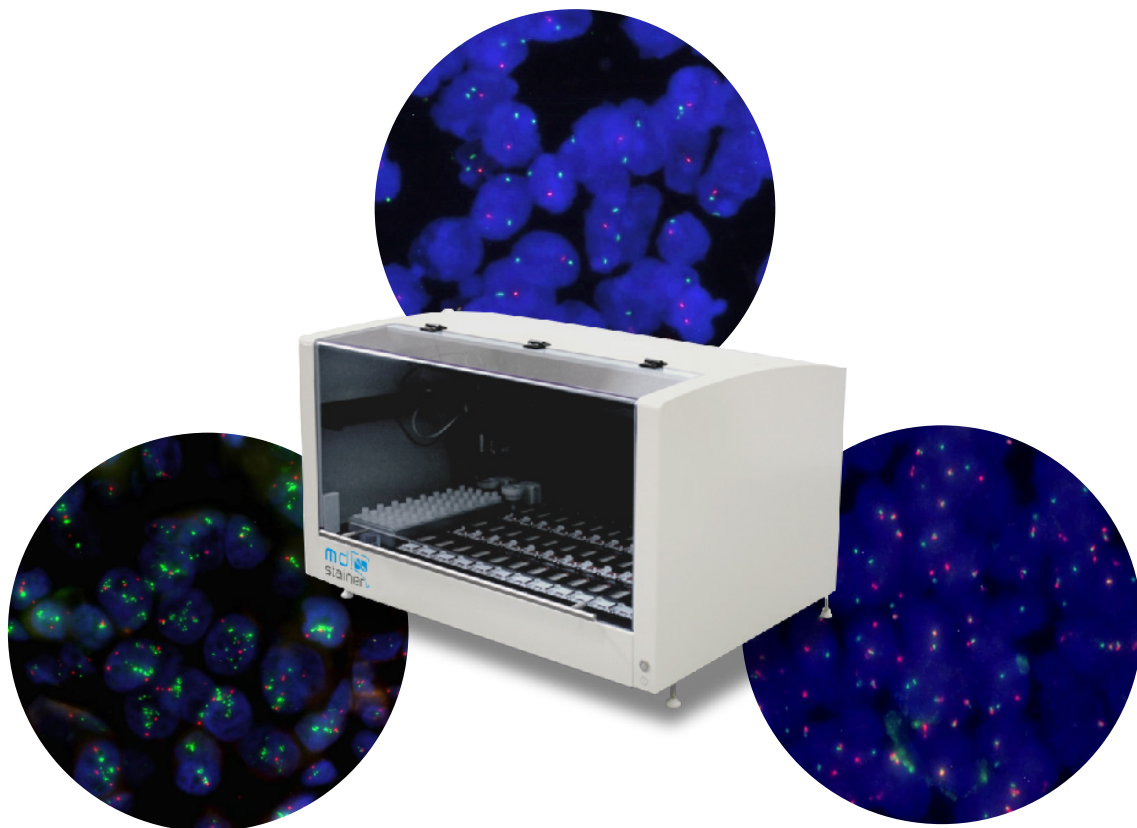


AUTOMATED FLUORESCENT IN SITU HYBRIDIZATION (FISH)

- Capacity for **36 positions** by means of independent and monitored incubation chambers
- **Full automatic protocols** which allow overnight processing
- **Easy handling, robust and reproducible**
- **Data Reports and LIS connections** for management and traceability
- Complete pretreatment kits and FISH probes at **ready to use** format



SARCOMAS AND GLIOMAS

EWSR1 (22q12.2.) Break Apart
 FOXO1 (13q14.11.) Break Apart
 MDM2 (12q15) / CCP12
 FUS (16p11.2.) Break Apart
 SS18 (18q11.2.) Break Apart
 CHOP (12q13.3.) Break Apart
 TP73/ ABL2 (1p36./1q25.)
 GLTSCR1/ ZNF443 (19q13./19p13.)

ONCOHEMATOLOGY

BCL2 (18q21.) Break Apart
 BCL6 (3q27.) Break Apart
 CCND1 (11q13.) Break Apart
 MYC (8q24.) Break Apart
 IGH (14q32.33.) Break Apart
 MALT1 (18q21.32.) Break Apart

LUNG CANCER

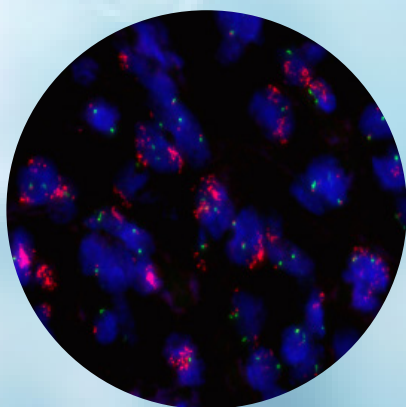
ALK (2p23.2.) Break Apart
 ROS1 (6q22.1.) Break Apart
 MET (7q31.2) / CCP7

BREAST CANCER

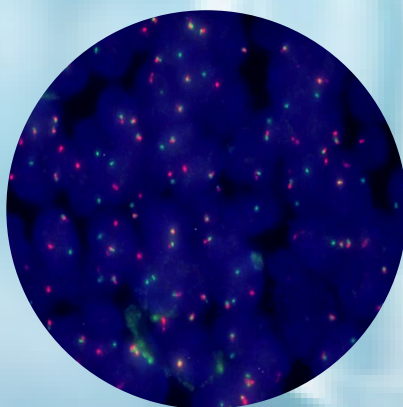
ERBB2 (17q12) / CCP17

OTHER SOLID TUMORS

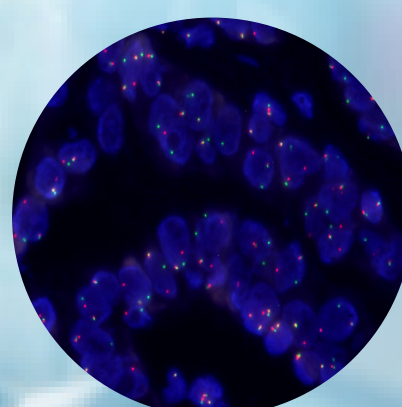
TFE3 (Xp11.23) Break Apart



Undifferentiated liposarcoma
with MDM2 gene amplification



Follicular lymphoma with BCL2
translocation



Renal carcinoma associated with
the Xp11.2 translocation in a
female patient

Semi- automatic FISH available for more than 100 probes

Manufactured by:



Parque Tecnológico Ciencias de la Salud
 Avda. del Conocimiento, 100
 18016 Granada (Spain)
 Tel: (+34) 958 27 14 49
 Fax: (+34) 958 27 14 34
 Hotline: (+34) 958 10 50 11
www.vitro.bio



Distributed by: