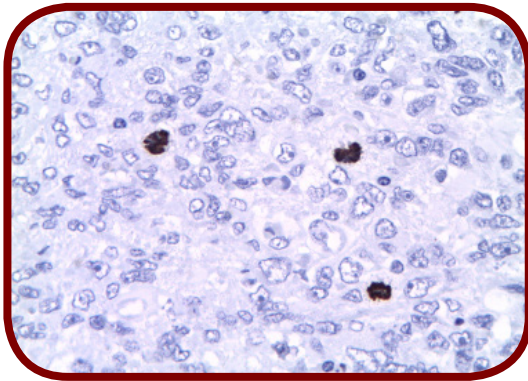


# Melanoma panel



[Clone: POLYCLONAL]

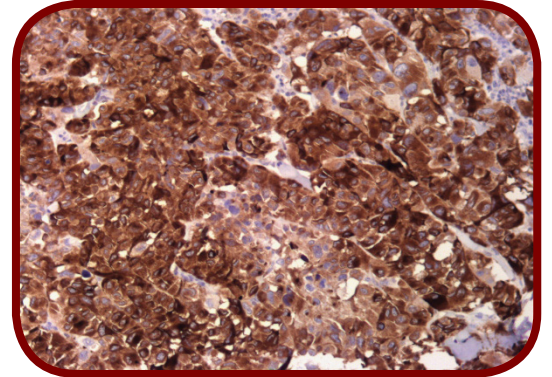
MAD-000584QD

## PHH3

- **More relevance in tumor activity than Ki67.**
- Very good marker to discriminate mitosis from apoptotic bodies or fragments of nuclear cariorrexis.
- Useful in tumor grading, especially when the number of mitosis has to be evaluated.
- Better reproducibility in evaluating mitotic figures in melanoma.

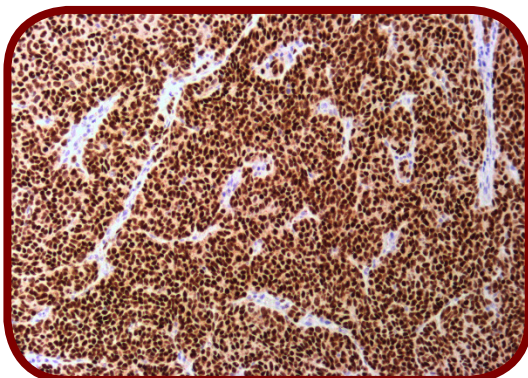
## Thyrosinase

- Catalyzes several steps in the melanin pigment biosynthetic pathway.
- Mutations of the tyrosinase gene occur in various forms of albinism.
- **Specific marker for melanomas, not cross reacting with any other tumors or normal tissues tested.**
- **More sensitive than HMB-45 or MART-1 (MelanA).**
- Stains melanotic as well as amelanotic variants of melanoma.
- Labels higher percentage of desmoplastic melanomas than HMB-45.



[Clone: T311]

MAD-000927QD



[Clone: C5/D5]

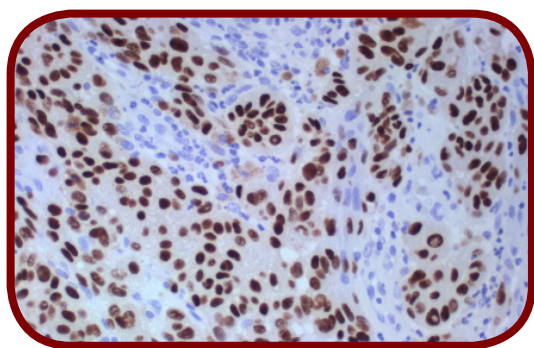
MAD-000924QD

## MiTF

- MiTF is a transcription factor implicated in pigmentation, bone and mast cells development.
- **Identifies malignant melanoma and helps distinguishing mast cell lesions from lesions of myeloid derivation.**
- PEComas (perivascular epithelioid cell tumors) express MiTF in a high percentage of cases (aprox 90%).

## SOX 10

- **Major sensitivity** as **S100 protein** in the diagnostic of melanoma, especially its **desmoplastic variant**.
- **Major specificity** than **S100 protein** in detecting **lymph node metastasis**.
- Marker of neuroectodermal derived tumors with positivity in Schwannomas, neurofibromas, PNET, malignant peripheral nerve sheath tumor and gastrointestinal neuroectodermal malignant tumors.

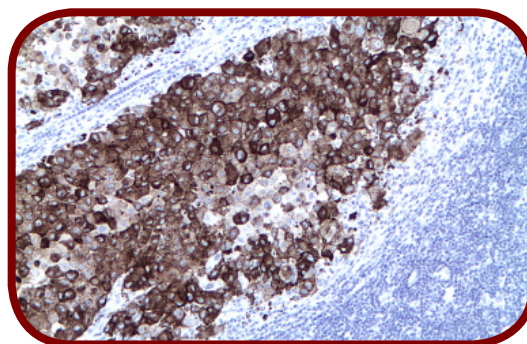


[Clone: EP268]

MAD-000656QD

## PNL 2

- **Positive**
  - > Intra-epithelial nevus
  - > Primary melanoma – more than 70% of the tumors
  - > Majority of the clear cell sarcomas
  - > Focal in angiomyolipomas and lymphangioleiomyomatosis
- **Negative**
  - > Desmoplastic melanoma
  - > Intradermic nevus and the dermic component of the compound

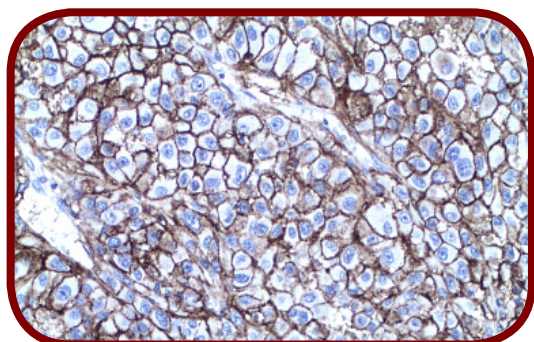


[Clone: 211F1.1]

MAD-000586QD

## Melanoma associated antigen

- **Positive** in the majority of melanocytic proliferations, benign and malignant.
- Better sensitivity in detecting positive cells in sentinel lymph nodes.
- Stains the majority of desmoplastic and spindle cell melanomas.



[Clone: KBA.62]

MAD-000338QD

### All melanoma antibodies

Antibody	Clone	Reference
HMB45	HMB45	MAD-000375QD
MAGE-1	6C1	MAD-000168QD
MELAN A/MART-1	EP43	MAD-000695QD
MelanomaAssoc.Antigen	KBA.62	MAD-000338QD
MiTF	C5+D5	MAD-000924QD
NESTINA	10C2	MAD-000719QD
PHH3	POLYCLONAL	MAD-000584QD

Antibody	Clone	Reference
PNL2	211F1.1	MAD-000586QD
S100 PROTEIN	4C4.9	MAD-001221QD
S100-BETA PROTEIN	SP127	MAD-000592QD
SOX 10	EP268	MAD-000656QD
THYROSINASE	T311	MAD-000927QD
VIMENTIN	SP20	MAD-000326QD

**vitro**  
**master diagnóstica**<sup>®</sup>  
 Parque Tecnológico Ciencias de la Salud  
 Avda. del Conocimiento, 100  
 18016 Granada (Spain)  
 Tel: (+34) 958 27 14 49  
 Fax: (+34) 958 27 14 34  
 Hotline: (+34) 958 10 50 11  
[export@vitro.bio](mailto:export@vitro.bio)  
[www.masterdiagnostica.com](http://www.masterdiagnostica.com)



Distributed by

